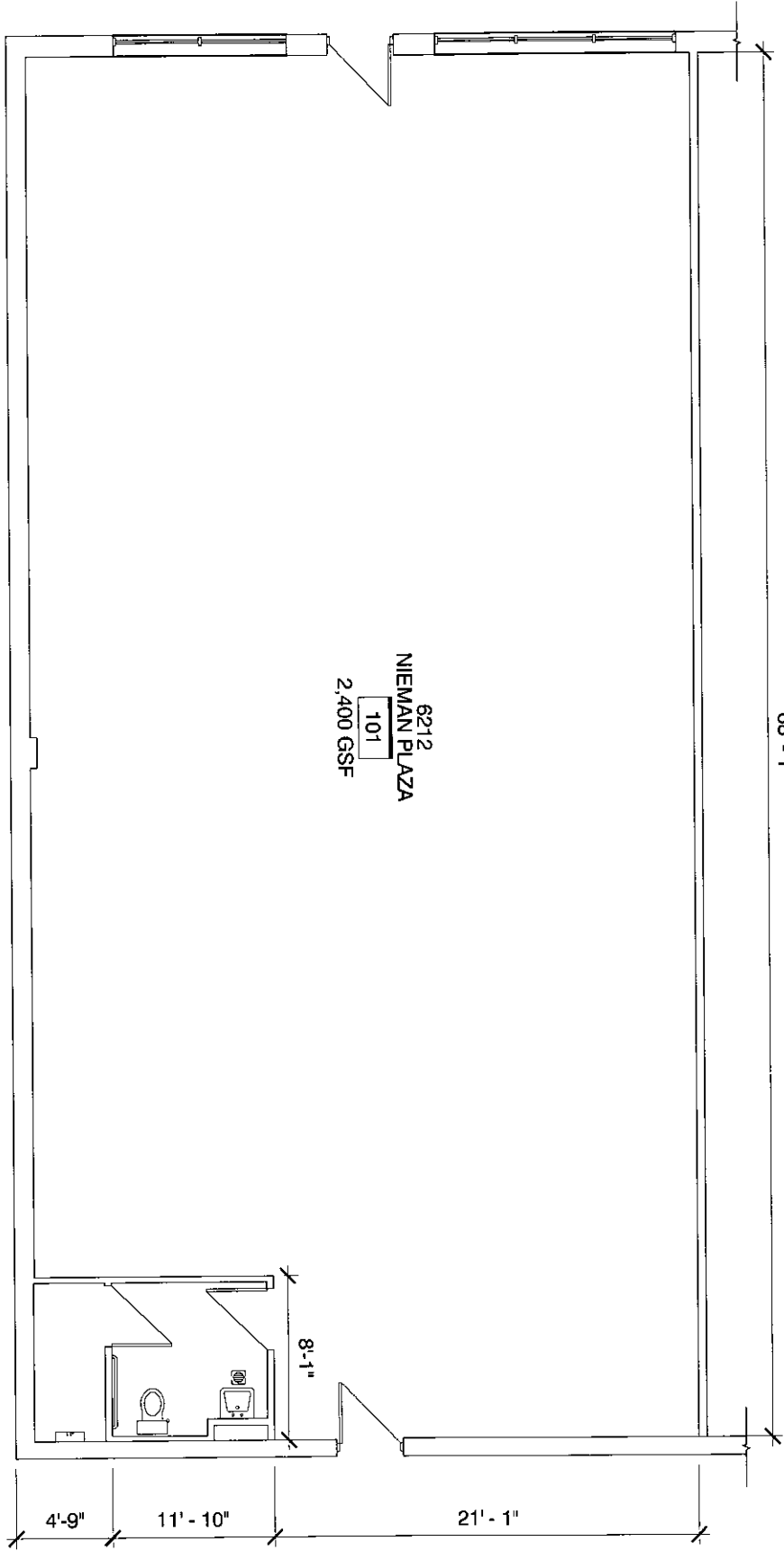
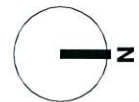
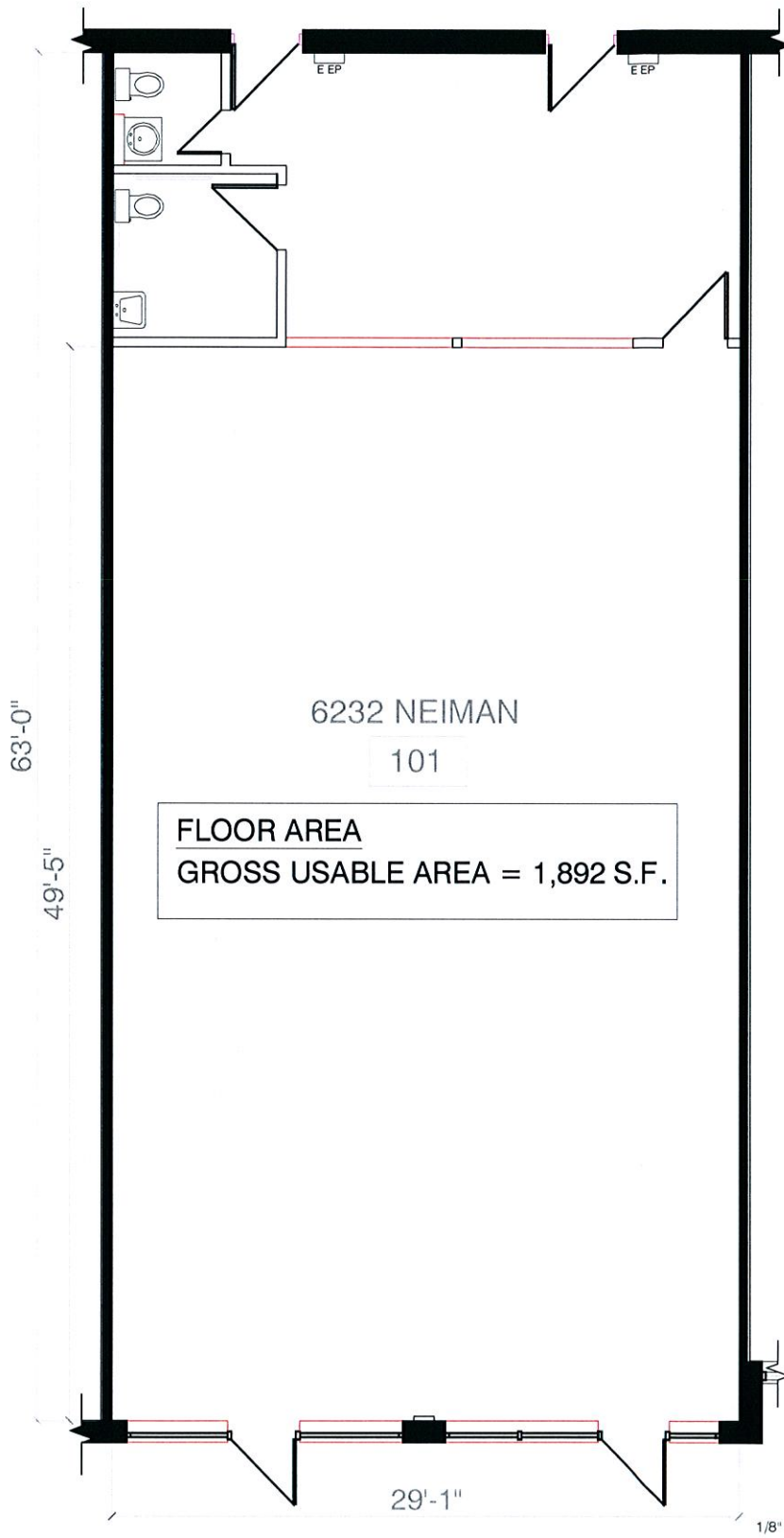


68' - 1"

6212
NIEMAN PLAZA
101
2,400 GSF



REES MASILIONIS TURLEY	ARCHITECTS	REGISTERED ARCHITECTS	STATE OF MISSOURI
1111 N. GARDNER STREET SUITE 200 ST. LOUIS, MO 63102	1111 N. GARDNER STREET SUITE 200 ST. LOUIS, MO 63102	PHONE: (314) 433-1111 FAX: (314) 433-1112 WWW.REESMASILIONIS.COM	
NIEMAN PLAZA 6212 NIEMAN ROAD SHAWNEE, KS 66203		EXISTING FLOOR PLAN 3/16" = 1'0"	
OPEN FLOOR PLAN		A01	



1/8" = 1'-0"

**REES
MASILIONIS
TURLEY**
ARCHITECTURE

908 BROADWAY 6TH FLOOR
KANSAS CITY MO 64105
816.842.1292
816.842.1878
ARCHITECTURE@REEMT.COM

PROJECT
TED GREENE COMPANY

NIEMAN PLAZA
6232 NIEMAN ROAD
SHAWNEE, KANSAS

PROJECT NO. 2010310.004
DATE FEBRUARY 26, 2010
Drawn By: Dennis L. Shaffer

SHEET NUMBER
A01

© 2010 Rees Masilionis Turley Architecture, LLC

All rights reserved. No part of this document may be reproduced or utilized in any form without the prior written authorization of Rees Masilionis Turley Architecture, LLC.